

FAAST LT

Password Recovery Feature

This procedure can be used to recover a lost password from a FAAST LT device. It should be used when a unit has been installed and the password has been changed but is subsequently forgotten or misplaced. *Please note: the default password in a new device is 3111.*

1. Open the front panel of the FAAST LT unit (as shown in *Figure 1.* to the right). The device fan will shut down and the unit automatically enters the *Service Mode*.

2. Remove the front panel flat cable from the connector on the main PCB.

3. Power off, then power on the unit. The unit will enter *Maintenance Mode* and the fan will start up; the front panel LEDs will remain off.

4. Connect the USB cable to the device USB port. *Please note: the FAAST LT USB driver must already have been installed onto the PC.* Wait 5 seconds for communications to synchronise with the PC.

5. Run the software application: *FAAST_LT_pwd_recovery*. The pop-up will appear (as shown in *Figure 2.* to the right). *Please note: it may not be using COM3.*

6. Click on CONNECT. If connection fails, click on the button (as shown in *Figure 3.* to the right), and search for the correct FAAST LT port in the Device Manager panel (as shown in *Figure 4.* to the right). Double click on the device icon in the list.

7. Once connected, a new pop-up window will show the Device Serial Number and a special Password Information String (as shown in *Figure 5.* to the right). You will need both of these. The string can be copied using the Copy in Clipboard button.

8. Close the program, disconnect the USB cable, power off the device and reconnect the flat cable (as shown in *Figure 1.* to the right).

9. Communicate the Password Information String data (in the Clipboard), together with the Device serial Number, to Honeywell Europe Technical Services, who will provide the 'lost' password.

System Sensor Europe
Technical Services
United Kingdom

Tel: +44 (0) 1403 226240
Fax: +44 (0) 1403 330695

E-Mail: SSE.Technical@systemsensor.com

www.faast-detection.com

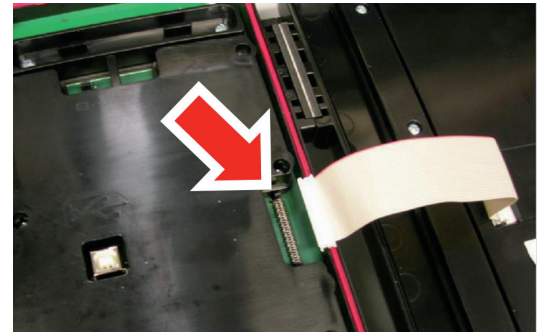


Figure 1.

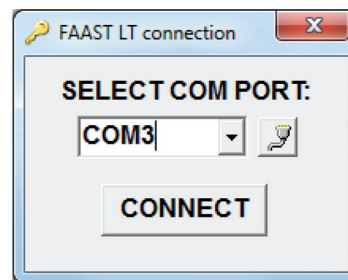


Figure 2.



Figure 3.

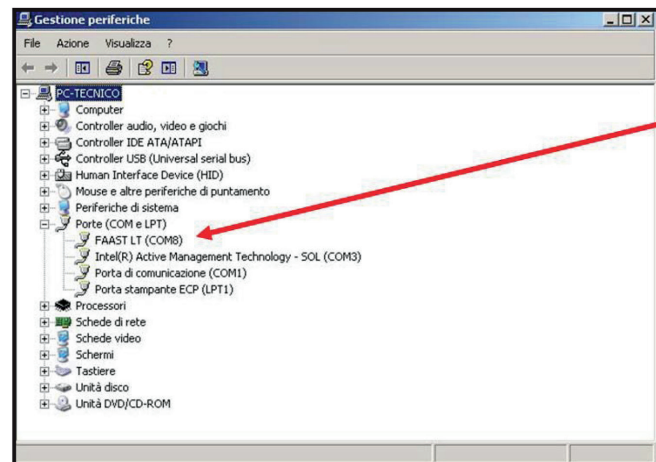


Figure 4.



Figure 5.