

FAAST LT

FAAST LT Auto Ultra Tuning Instructions

The FAAST LT aspirating smoke detectors are designed for reliable trouble-free operation. However, if a FAAST LT with a production date before 2017 causes frequent disturbances in the air flow, software check the ultrasonic air flow sensor and remedy if necessary. Production date can be found on the device nameplate lower right; the four numbers before the "T" signify (yywwT) j = year, w = week.

The software and its function can only be used on FAAST LT devices equipped with firmware v3. This test software can not "fix" or optimize faulty devices or configurations.

If necessary, copy the file "FAAST_LT_auto_ultra_tuning_v1.1.zip" to the desktop of your computer, unzip it with the password "giotto" and rename the file from .ese to .exe.

Then please proceed as follows:

1) Turn on the FAAST LT unit and allow it to run in normal operation. Set the unit to Technician / Maintenance mode (**factory default 3111 password**), open the front door, and connect the FAAST LT unit to your computer via the USB cable.

2) Make sure that the pipe network configured with Pipe IQ and intended for this detector is connected to the input / inputs of the device. With open pipe connections, the program will give a wrong result.

3) Start the software "FAAST LT_auto_ultra_tuning_v1.1." The software should automatically select the correct COM port. Click on "Connect".

4) Click on "ULTRASONIC TUNING". After about 3 minutes, the program calculates three parameters (e.g. best settings 2,6,15), and proposes the best parameter (e.g. "2") for selection. See Figure 1. to the right for an example; the program displays three parameters (2,6,15) and at the same time indicates that the best selection is "2".

5) Click "OK" to confirm the value. A file log is stored with all the data of the operation in the same folder of the program.

6) Click on "CANCEL" to cancel the change. A file log is created with all the data of the process.

7) Click "DISCONNECT" and restart the FAAST LT (power cut) to apply the new settings.

Please Note: If the program displays the values "4" or "15" in the selection window, this means that a new adjustment of the airflow sensor will have a negligible effect. In this case, it is probably best to replace the device. The original factory setting is "15".

After adjusting the airflow sensor, the FAAST LT should run for some time in its typical operating environment. Should there be any instability, it is recommended to replace the device.

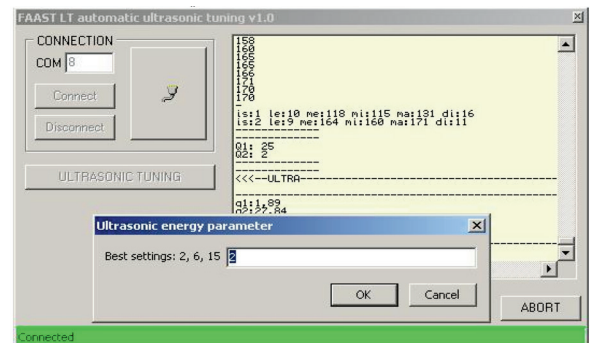


Figure 1.

Please contact your Representative if you have any questions.

www.faast-detection.com

Diagnostics Functions

RESET DEVICE (2 seconds): same as the FAAST LT RESET button

RETRIEVE LOG (10 seconds): this will retrieve the entire log and save it in a file on the desktop (assuming the Diagnostic Tool is run from the desktop as suggested).

EXECUTE DIAGNOSTIC (variable time required):

This will retrieve all the information from the device and tests various functions. Again, if the Diagnostic Tool is run from the desktop, the results will be saved in a file on the desktop.

At the end, the Diagnostic will automatically perform a RESET on the FAAST LT.

Please note:

- Running the Diagnostics will cause FAULT relay activation during the tests.
- With TEST ALARMS selected, the program will activate the alarm relays.
- With FULL DIAGNOSTIC selected, an extended set of functions is checked.
- Return the Diagnostic data file to sse.technical@systemsensor.com
- Important- after using this program it is necessary to restart the device by powering it OFF and ON again after 10 seconds to restore normal behavior.

Time required for the diagnostic depends on the options selected:

FULL DIAGNOSTIC	TEST ALARMS	TIME REQUIRED
NO	NO	~100sec
NO	YES	~140sec
YES	NO	~15min
YES	YES	~17min

To stop the Diagnostics, click on the ABORT button repeatedly until execution is stopped.

Please contact your Representative if you have any questions.

www.faast-detection.com