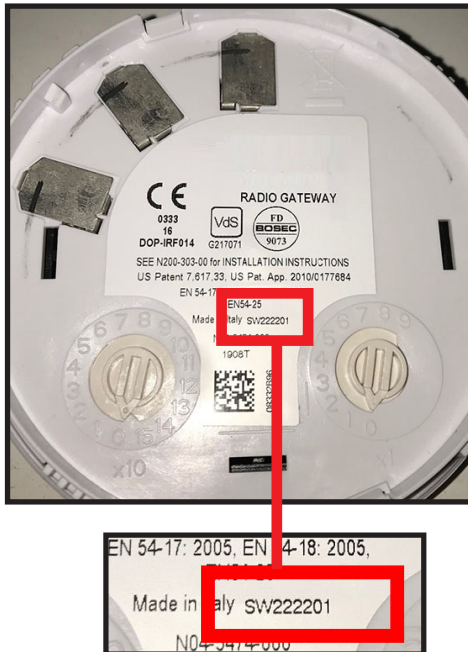


IMPORTANT

Figure 1: Checking the RF Gateway Firmware Version



AgileIQ™ version 3.4.5 (or above) is required to be able to configure the RF sounder. This can be downloaded from the System Sensor Europe website:

www.systemsensoreurope.com

Products/Agile Wireless/Agile Software Tools.

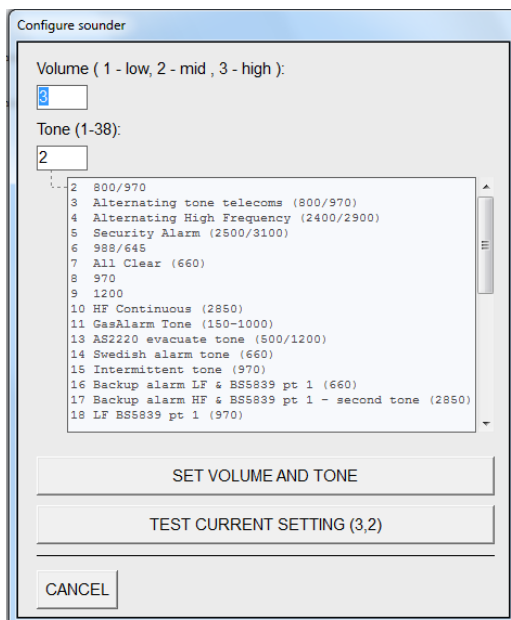
The RF sounder is supported in Agile™ RF gateways that have firmware version **222201 or above**. (see **Figure 1: Checking the RF Gateway Firmware Version** to confirm your gateway has this ability.)

CONFIGURING THE SOUNDER SETTINGS

The volume and tone settings on a sounder can be set to a wide range of operating modes. The factory default settings are Tone 8 (with the second stage tone as 2) and High volume. To change the tone and/or volume setting requires a programming operation using the **Device Direct Command** in AgileIQ.

- 1) Take the un-commissioned sounder, ensure that the address is set to 00.
- 2) Insert the batteries.
- 3) Select the **Device Direct Command** tab.
- 4) Ensure that the sounder is within range of the dongle (but not < 1m)
- 5) Double click on the command screen to reveal the list of options and click on **Configure Sounder** to reveal the **Configure Sounder** dialog box (see Figure 2).

Figure 2: RF Sounder Configuration Dialog Box



Volume setting

The sounder has 3 possible volume settings: Low, Medium, High. Type in the correct number to configure the sounder volume to the required setting.

Tone setting

An explanatory list of the range of sounder tone settings are detailed in a table in the RF sounder installation manual.

Type in the correct number to configure the sounder tone to the required setting.

Use the **TEST CURRENT SETTING** button to hear the sounder output.

When the Tone and/or Volume settings are correct, click on the **SET VOLUME AND TONE** button.

Note: Always power the device off to set the correct system address prior to commissioning.